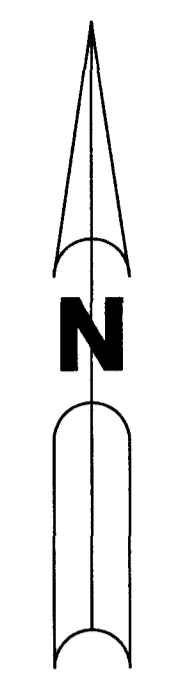


# WHITWORTH AGR-PUD (SOUTH) - PLAT FOUR

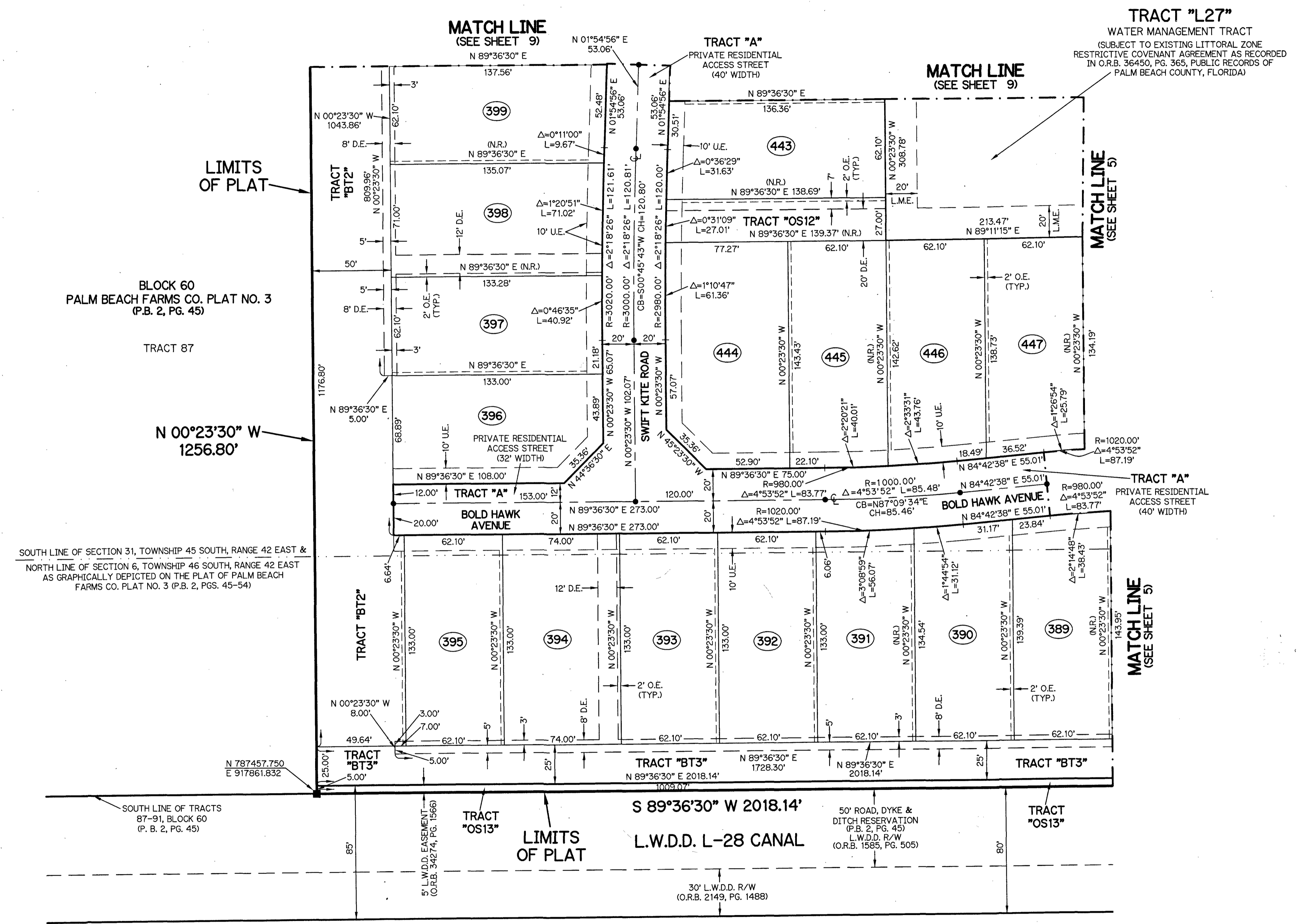
BEING ALL OF TRACTS 88 THROUGH 90, INCLUSIVE, AND A PORTION OF TRACTS 78 THROUGH 82, INCLUSIVE, TRACT 87, TRACT 91, AND A PORTION OF ROAD, DYKE AND DITCH RESERVATIONS 30 FEET IN WIDTH, WHICH ABUT SAID TRACTS, ALL LYING WITHIN BLOCK 60, PALM BEACH FARMS CO. PLAT NO. 3, ACCORDING TO THE PLAT THEREOF, AS RECORDED IN PLAT BOOK 2, PAGE 45, OF THE PUBLIC RECORDS OF PALM BEACH COUNTY, FLORIDA, LYING IN SECTION 31, TOWNSHIP 45 SOUTH, RANGE 42 EAST AND SECTION 6, TOWNSHIP 46 SOUTH, RANGE 42 EAST

SHEET 10 OF 10

61



SCALE: 1" = 40'



**LEGEND:**

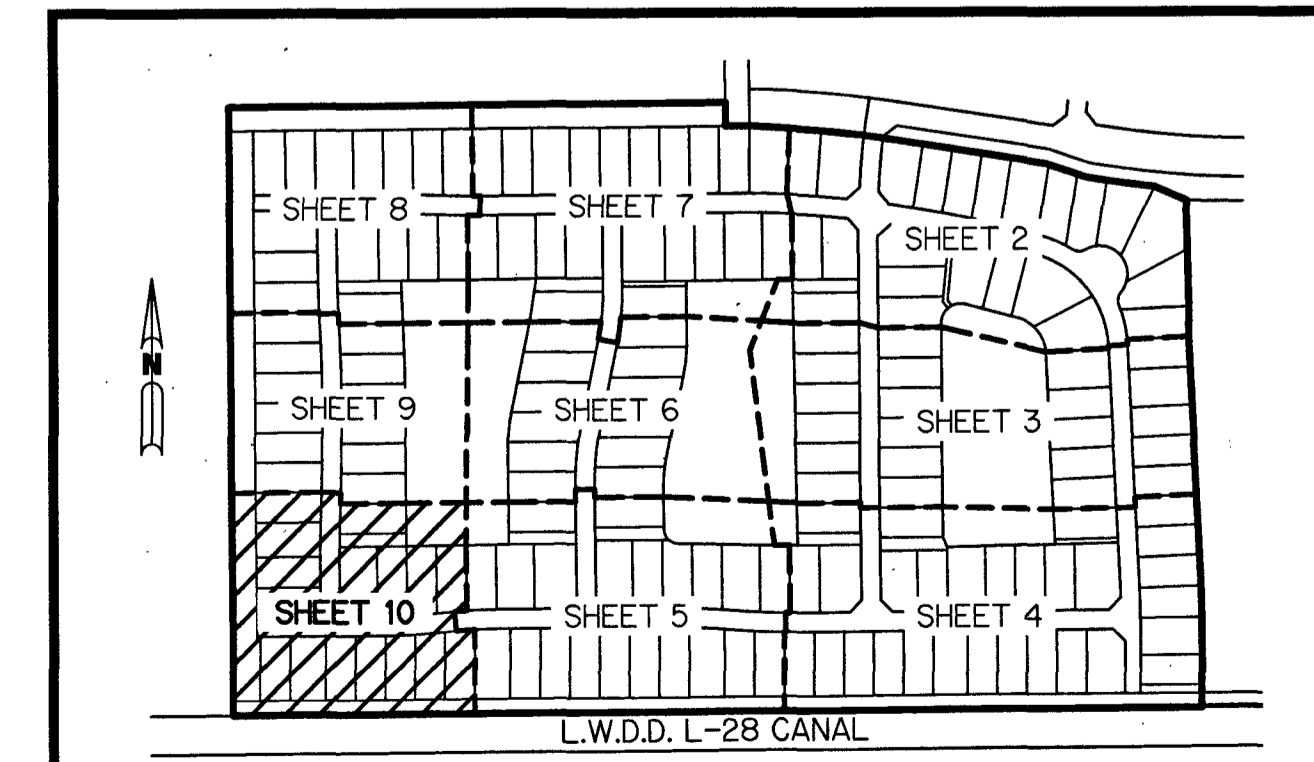
▲	- SET PERMANENT REFERENCE MONUMENT 5/8" IRON ROD 1.5' IN LENGTH 1.4" CAP STAMPED PRM L.B. #7741	N.T.	- NON-TANGENT
△	- FOUND PERMANENT REFERENCE MONUMENT 5/8" IRON ROD 1.5' IN LENGTH 1.4" CAP STAMPED PRM L.B. #7741	N.T.S.	- NOT TO SCALE
■	- SET PERMANENT REFERENCE MONUMENT 4"x4" CONCRETE MONUMENT WITH 1.5" DISK STAMPED PRM L.B. #7741	O.R.B.	- OFFICIAL RECORD BOOK
□	- FOUND PERMANENT REFERENCE MONUMENT 4"x4" CONCRETE MONUMENT WITH 1.5" DISK STAMPED PRM L.B. #7741	O.E.	- MAINTENANCE & ROOF OVERHANG EASEMENT
●	- SET PERMANENT CONTROL POINT NAIL WITH 1.25" DISK STAMPED PCP L.B. #7741	P.B.C.O.	- PALM BEACH COUNTY
○	- FOUND PERMANENT CONTROL POINT NAIL WITH 1.25" DISK STAMPED PCP L.B. #7741	P.B.C.U.E.	- PALM BEACH COUNTY UTILITY EASEMENT
AGR	- AGRICULTURAL	P.B.	- PLAT BOOK
Δ	- DELTA ANGLE	P.C.	- POINT OF CURVATURE
B.T.	- BUFFER TRACT	P.C.C.	- POINT OF COMPOUND CURVATURE
BLK	- BLOCK	P.C.P.	- PERMANENT CONTROL POINT
CB	- CHORD BEARING	P.D.E.	- PUBLIC DRAINAGE EASEMENT
CH	- CHORD DISTANCE	PG.	- PAGE
⊙	- CENTERLINE	PGS.	- PAGES
D.B.	- DEED BOOK	P.O.B.	- POINT OF BEGINNING
D.E.	- PRIVATE DRAINAGE EASEMENT	P.N.R.I.	- POINT OF NON-RADIAL INTERSECTION
ESMT	- EASEMENT	P.N.T.I.	- POINT OF NON-TANGENT INTERSECTION
F.P.L.	- FLORIDA POWER & LIGHT	P.O.C.	- POINT OF COMMENCEMENT
L	- ARC LENGTH	P.O.I.	- POINT OF INTERSECTION
L.A.E.	- LIMITED ACCESS EASEMENT	P.R.C.	- POINT OF REVERSE CURVATURE
LB	- LICENSED BUSINESS	P.R.I.	- POINT OF RADIAL INTERSECTION
L.M.A.E.	- LAKE MAINTENANCE ACCESS EASEMENT	P.S.M.	- PROFESSIONAL SURVEYOR AND MAPPER
L.M.E.	- LAKE MAINTENANCE EASEMENT	P.T.	- POINT OF TANGENCY
L.W.D.D.	- LAKE WORTH DRAINAGE DISTRICT	PUD	- PLANNED UNIT DEVELOPMENT
N.R.	- NOT RADIAL	R	- RADIAL
N.R.T.R.	- NOT RADIAL TO REAR LINE	RAD	- RADIAL
		R/W	- RIGHT-OF-WAY
		R.D. & D.	- ROAD, DYKE AND DITCH RESERVATION
		SIRC	- SET 5/8" IRON ROD & CAP STAMPED "PRM LB7741"
		SN&D	- SET MAGNETIC NAIL & DISK STAMPED "PRM LB7741"
		S.T.	- SURVEY TIE
		TYP.	- TYPICAL
		U.E.	- UTILITY EASEMENT
		N=780000.00	STATE PLANE COORDINATE VALUE
		E=930000.00	

SOUTH LINE OF SECTION 31, TOWNSHIP 45 SOUTH, RANGE 42 EAST & NORTH LINE OF SECTION 6, TOWNSHIP 46 SOUTH, RANGE 42 EAST AS GRAPHICALLY DEPICTED ON THE PLAT OF PALM BEACH FARMS CO. PLAT NO. 3 (P.B. 2, PGS. 45-54)

SOUTH LINE OF TRACTS 87-91, BLOCK 60 (P. B. 2, PG. 45)

**NOTES:**  
 COORDINATES SHOWN ARE GRID COORDINATES DATUM = NAD 83 (1990 ADJUSTMENT)  
 ZONE = FLORIDA EAST ZONE  
 LINEAR UNIT = U.S. SURVEY FEET  
 COORDINATE SYSTEM = 1983 STATE PLANE TRANSVERSE MERCATOR PROJECTION  
 ALL DISTANCES ARE GROUND (UNLESS OTHERWISE NOTED)  
 SCALE FACTOR = 1.00002026  
 PLAT BEARING = GRID BEARING  
 GROUND DISTANCE X SCALE FACTOR = GRID DISTANCE

THIS INSTRUMENT WAS PREPARED BY  
 PERRY C. WHITE, P.S.M. 4213, STATE OF FLORIDA  
 SAND & HILLS SURVEYING, INC.  
 6675 E. CALUMET CIRCLE  
 LAKE WORTH, FLORIDA 33467  
 LB-7741



KEY MAP  
N.T.S.

WHITWORTH AGR-PUD (SOUTH) - PLAT FOUR

SH0362

SHEET 10 OF 10